

AAE





Anneke Bester was born and raised in South Africa. She grew up in a time of inequality and set boundaries for people, be it race or sex. These inequalities are not the sole propriety of South Africa. Wherever Anneke moved, she saw the same inequality but with many different names and different boundaries. Anneke strives to take the blinkers off, bring people together and make them see past race or sex and see the person within. Anneke's African roots can clearly be seen in her work. The elongated forms belong to no specific race or culture, they are people of the world with the same fears and the same concerns.

Anneke's work focuses on celebrating Femininity in all its aspects. She sculpts gorgeous female forms in sensual poses. She sees the female in its internal beauty and its core driving force that only a female sculptor can explore to its full extent.

Anneke toys with the line between sensual and sexual. She is pro femininity, Anneke doesn't see the female form as an object but as a vessel of female energy that can be exuded in various forms and applications.

She develops the female energy of nature and depicts the female forms as daughters of mother earth in her most recent work. In previous series she put the spotlight on modesty and our perception of nudity vs being covered with a series of work inspired by life in the Middle East and how cultural tradition can still allow women's inner beauty and strength to shine through whatever the outer covering is.

As a career artist Anneke has spent many years working as a woman in the male dominated commercial side of the arts, from The Court Theatre to movies like The Hobbit. Anneke has always strived for female equality with feminine energy.





Sister Water (2019) Editions of 11

If water was a beautiful woman, would we protect her?

In a world where oil is becoming a dirty word and fresh water is our only true gem, we pollute the arteries of mother earth on a daily basis. Anneke Bester takes a stand in this momentous time of realisation. The time in the life of mother earth that is critical to her survival. Anneke is currently spending lots of time in Dubai, surrounded by the sand dunes that is a reminder of what New Zealand could become.

In this body of work she shows us a mirror, depicting water in a human form, we are after all mostly water. She shows us the beauty of water in the way we understand beauty, the delicateness of water and the ecosystems it affects. When we look into our reflection in the water surrounding us are we going to see a beautiful clear reflection or will it be polluted with our own arrogance?

4 large works on 1meter tall base in bronze:  
Reflection(1.6m),  
Emanate(1.5m),  
Spring(1.75m) and  
Ripple(1.65m)

4 Medium sized works on 0.5m base or 1m base:  
Cascade(0.75m /1.25m),  
Ponder (0.7m /1.2m),  
Rise (0.9m /1.4m) and  
Tranquil (0.9m /1.4m)

Small tabletop works:  
Water Nymph,(25cm high)  
Bathe(10cm high), and  
Delta (10cm high)



Reflection



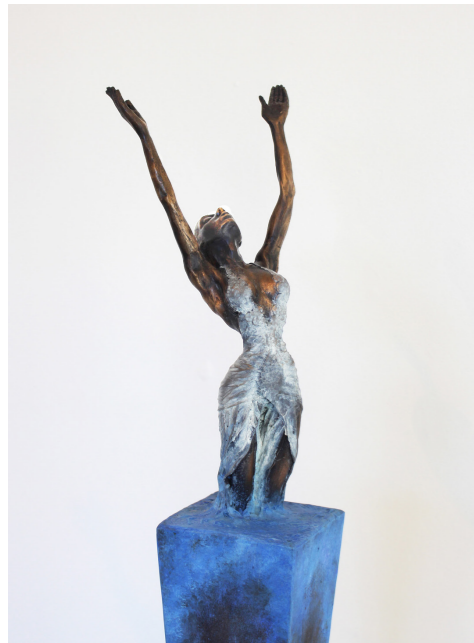
Emanate



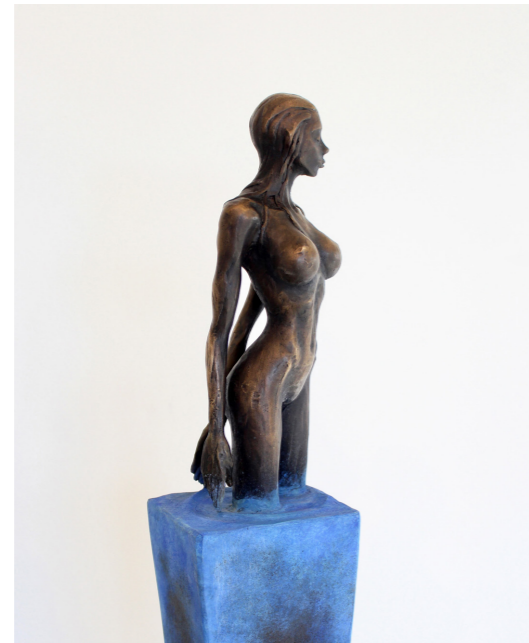
Spring



Ripple



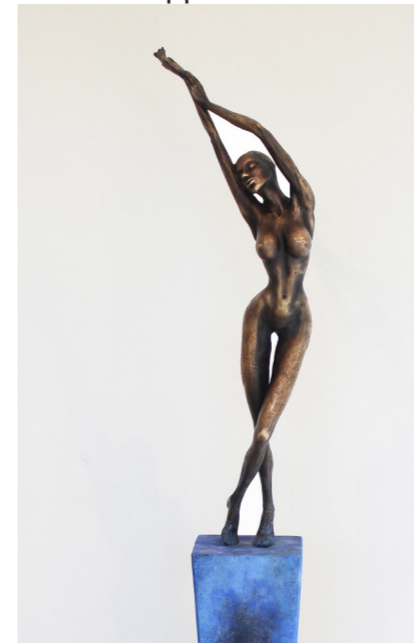
Cascade



Ponder



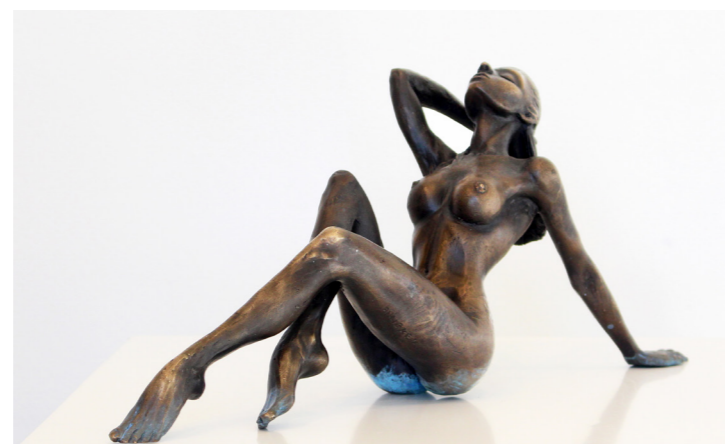
Rise



Tranquil



Water Nymph

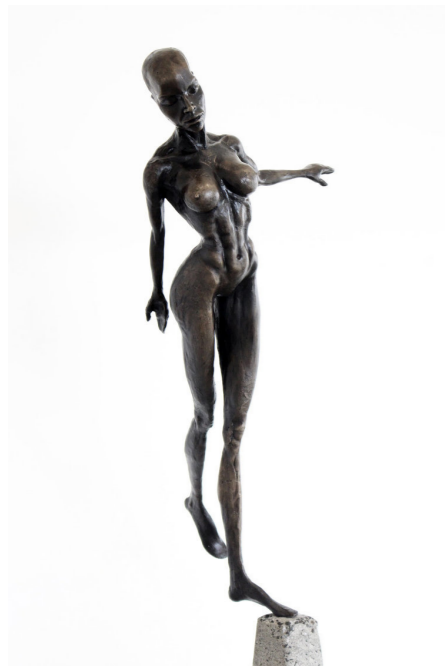


Bathe



Delta





Rhapsody



Victorious



Triumphant



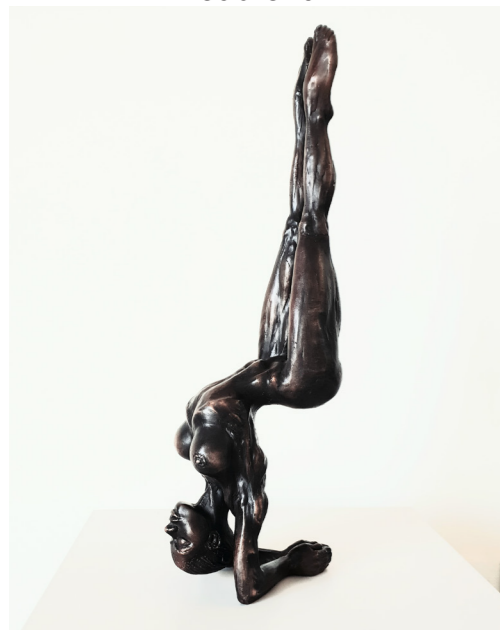
Jubilant



Enchanted



Solo



Equilibrium



Equipoise



Content

Solace of the Soul (2018) Editions of 11

If Beauty cannot be hidden and the soul shows through, what would the female body do other than dance?

In a series of work where movement is captured with female figures and flowing fabric, Solace of the Soul brings us back to the essence of femininity. Anneke celebrates her passion for the female form with a series of editioned as well as 1 off pieces

Works on 1m bases include:

Rhapsody(1.72m high),  
Victorious(1.8m high),  
Triumphant(1.5m high),  
Jubilant(1.5m high),  
Enchanted(1.47m high),

Tabletop works include:

Solo(35cm high) ,  
Equilibrium(45cm high),  
Equipoise(in stainless steel)(45cm high) and  
Content(30cm high)





Solace of the Soul (2018) One Offs

If Beauty cannot be hidden and the soul shows through, what would the female body do other than dance?

In a series of work where movement is captured with female figures and flowing fabric, Solace of the Soul brings us back to the essence of femininity. Anneke celebrates her passion for the female form with a series of editioned as well as 1off pieces

One off sculptures still available include:

Wall mounted: Extravagance(80cm high)

Free standing works:

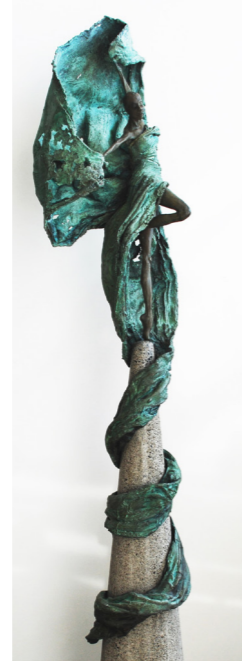
Allure(1.6m high),  
Solace(1.5m high),  
Vivication(1.6m high)  
Vitality (1.6m high),  
Repose(1.5m high),  
Rapturous(1.2m high),  
Exultant(1.2m high)

Works on 1m bases include:

Vivacity(1.7m high)  
Velocity (1.6m high)  
Splendor(1.6m high)



Extravagance



Allure



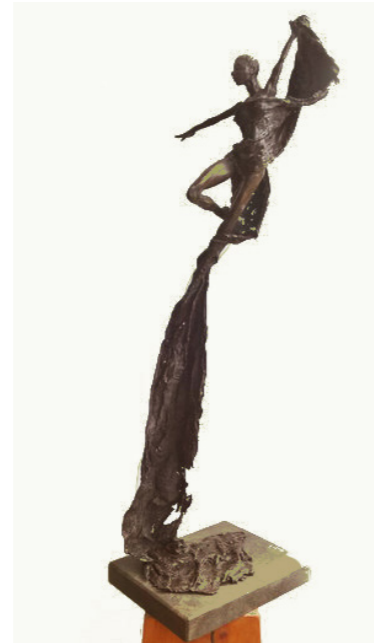
Solace



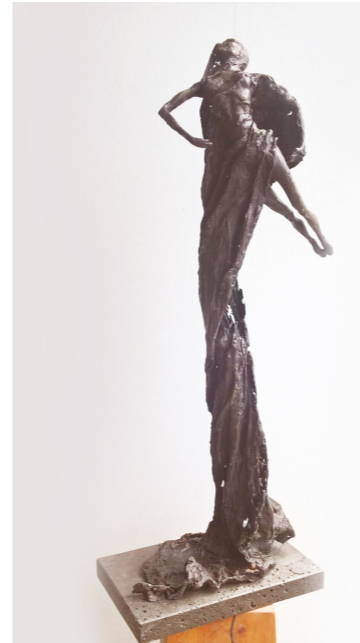
Vivication



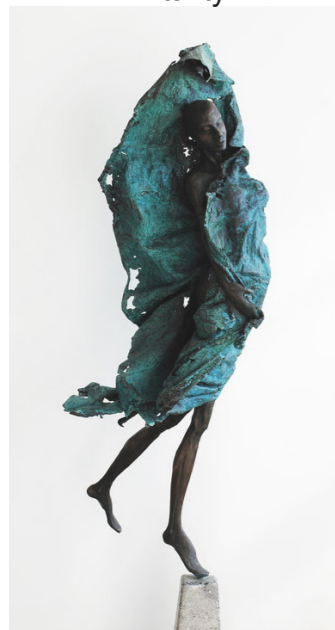
Vitality



Rapturous



Exultant



Vivacity



Velocity



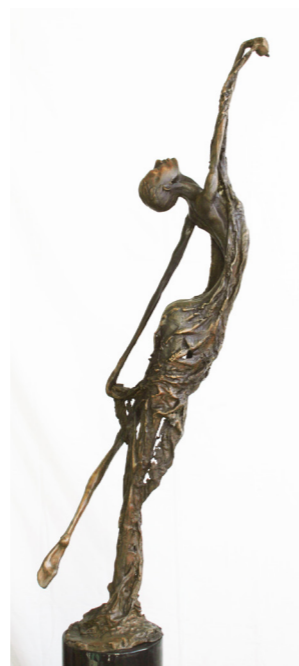
Splendor







Euphoric



Exhilarate



Kindred Spirit

Revealing (2017) Edition of 11

With Anneke's 2017 collection of works she exposes herself in her artwork. Her uncovering of her own emotion is clear in the jubilant series of work. Each piece shows her as artist experiencing an emotion related to the life changing experience of finding her soulmate. Some pieces are still covered in fabric while others break free from the cover and reveal her emotions. Her pieces are not faceless anymore; she gives them more detail and identity than in her previous work. This series of work is close to her heart.



Soar



Audacious



Succumb

This body of work includes sculptures on 1m bases:

- Euphoric(2m high),
- Exhilarate(2m high),
- Kindred Spirit(1.8m high),
- Soar(1.8m high),
- Audacious(1.8m high),
- Succumb(1.6m high),
- Graceful(1.6m high),
- Ecstatic(1.5m high)



Graceful



Ecstatic





Secretive



Blown Away



Cloaked

Veiled (2016) Edition of 11

Anneke explores the contrast of the exposed and the hidden. Where the female form had been celebrated in its purity, Anneke veils them in this body of work. Her recent stay in the Middle East has emphasised the idea of beauty being impossible to hide no matter how well you cover it. Beauty shines through on posture, pose, movement and line. Fabric cannot hide the beauty of the spirit within.



Masked



Overflow



Tucked Away

This series of work include:

Pieces on 1m bases include:

Secretive(1.6m high),

Blown Away(1.5m high),

Cloaked(1.7m high),

Masked(1.6m high),

Overflow (1.7m high)

Tabletop works include:

Tucked Away(35cm high),

Concealed(37cm high),

Shrouded(35cm high)

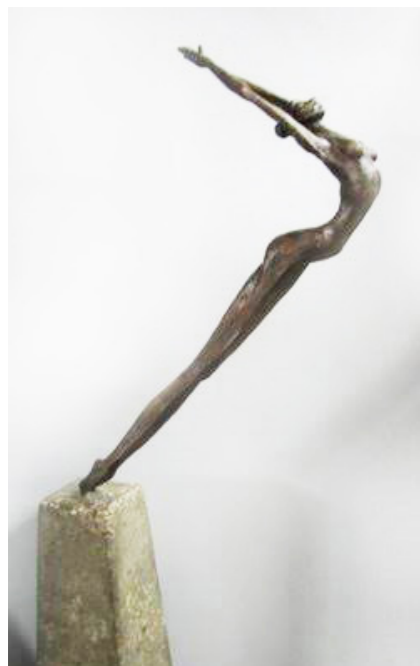


Concealed



Shrouded





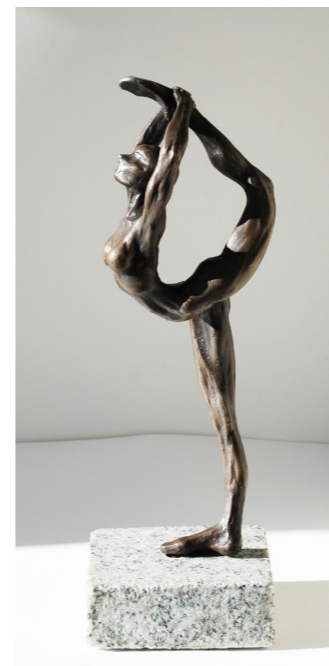
Nonchalant



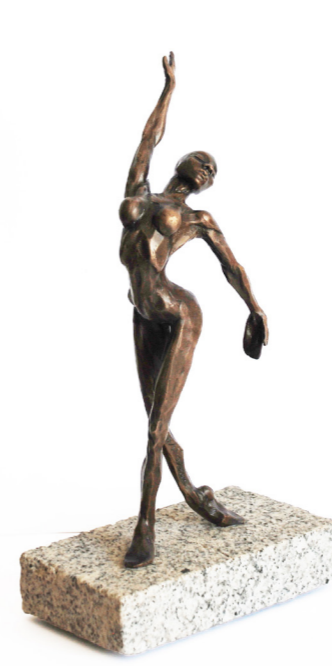
Unperturbed



Pirouette



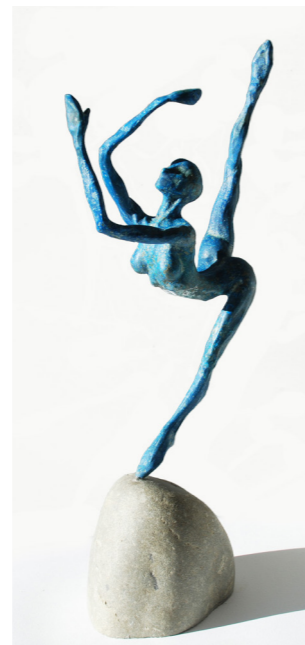
Elite



Consume



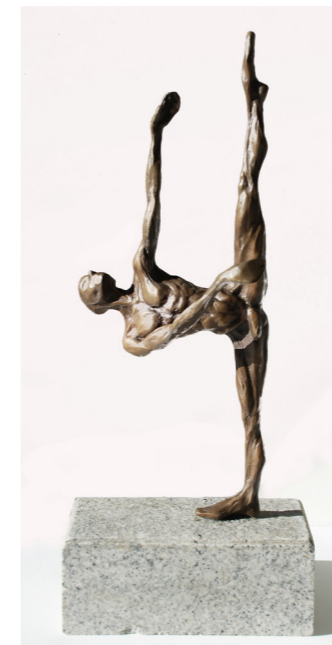
Flik-Flak



Grand Ecart



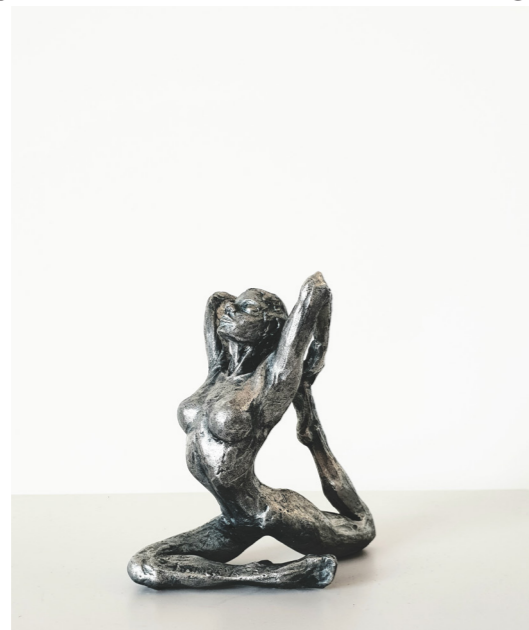
Entreinte du Sol



Attitude



Adagio



Connected



Impeccable



Faultless

Older work (2015 and before) Edition of 11

The series Anneke produces in 2015 focuses on the beauty of entertainment. In her day to day work life Anneke is involved in the performing arts. This series looks into the lives and the people behind the performances. She captures the moments of balance and beauty as these performers entertain us. She enhances the lines created by the performing artists as they use their bodies to the extremes and pushes the boundaries of human ability, then Anneke pushes it beyond. She leaves the viewer pondering the possibility of human ability and keeps them entranced.

Editions of 11 include:

Pieces on 1m bases include:

Nonchalant(1.6m high),

Unperturbed(1.7m high),

Pirouette(1.75m high)

Tabletop pieces include:

Elite(25cm high),

Consume(25cm high),

Flik-Flak(27cm high),

Grand Ecart(30cm high),

Entreinte du sol(35cm high),

Attitude(35cm high),

Adagio(35cm high),

Connected(in stainless steel)(20cm high),

Impeccable (in stainless steel)(27cm high),

Faultless(in stainless steel)(31cm high)

## **Gallery representation:**

### **Galleries in New Zealand:**

**Bryce Gallery**  
[www.brycegallery.co.nz](http://www.brycegallery.co.nz)

**Exhibitions Gallery**  
[www.exhibitionsgallery.co.nz](http://www.exhibitionsgallery.co.nz)

**Form Gallery**  
[www.form.co.nz](http://www.form.co.nz)

**Home Gallery**  
[www.homegalleryfinearts.com](http://www.homegalleryfinearts.com)

**Kereru Gallery**  
[www.kererugallery.co.nz](http://www.kererugallery.co.nz)

**Oxford Art Gallery**  
[www.artsinoxford.com](http://www.artsinoxford.com)

**Windsor Gallery**  
[www.windsorgallery.co.nz](http://www.windsorgallery.co.nz)

**York Street Gallery**  
[www.yorkstreetgallery.com](http://www.yorkstreetgallery.com)

### **Galleries in UAE:**

**Studio 7, Dubai**  
[www.studio7-seven.com](http://www.studio7-seven.com)

### **Galleries in Europe:**

**Artcatto, Portugal**  
[www.artcatto.com](http://www.artcatto.com)

## **Contact me directly:**

**Website:** [www.annekebest.com](http://www.annekebest.com)

**Email:** [annekebest@gmail.com](mailto:annekebest@gmail.com)

**Phone: Dubai: +971 52 401 7864**  
**(whatsapp)**  
**NZ: +64 21 179 2045 (whatsapp)**

